

A string of warm white lights is draped across the top of the poster, creating a decorative border.

Rowville Secondary College
Presents

STORIES in the DARK

by Debra Oswald

August 4 - 6, 2022
Rowville Performing Arts Centre

FROM THE PRODUCTION TEAM

What a joy it is to bring this beautiful piece of theatre to the Rowville Secondary College stage. After a tumultuous couple of years, it's been wonderful to see our production family gather around again, this time of course with so many new faces, and bring the magic back. We are so proud of the way our students have stepped up and taken ownership of this production by contributing so much both on and off the stage. As you will see when reading through this program, our smaller but dedicated cast and crew have for the first time taken on roles including songwriter, set builder, choreographer, musician, technical operator, publicity crew and so much more. This is of even greater consequence when you consider that many of our cast and crew have never before been part of a full-scale production, and that three of our four students playing the lead roles of Anna and Tomas are currently in Year 8. This new process has tested and challenged our students and brought out their best. Many of our ensemble are playing multiple roles, some you will see on the main stage and on the music stage, we have singers and a fabulous crew of students working hard behind-the-scenes to bring the magic to life.

We would like to take this opportunity to thank the students, families, fellow RSC staff and community who have supported and given so much to this production. Being part of production is always a highlight of our students' schooling life and we are so grateful that these students chose to take a risk with us and do something a little different. We're sure you'll agree that their efforts have been absolutely worth it.

We hope you get swept away in this performance and feel proud of the students' achievements. Enjoy!

- Madeline Dundon, Roderick Price, Andrew Martin and Jenn Walter (Production Coordinators)

SYNOPSIS & ABOUT THE PLAYWRIGHT

A terrified 12-year-old boy finds himself separated from his family in the unfamiliar streets of a war-torn city. Dodging sniper fire and mortar shells he takes refuge in a bombed-out house and in the total blackness his bravado crumbles into tears. Into his life steps Anna - older, street-smart and scornful of his crying. As a way of shutting the boy up, she starts to tell him a story that she vaguely remembers from her own childhood. And so begins a journey into the shifting, shimmering world of ogres, princes, singing bones, foolish lads and wolf-mothers.

Debra Oswald is a Sydney-based playwright and author. She began writing as a teenager and sold her first radioplay at 17. Since then, she's made her living as a writer for film, television, stage, and radio, as well as publishing a number of novels for children.

Debra has written extensively for the stage and is best known for her play *Dags*, which has had many productions both in Australia and overseas. Her other plays include *Sweet Road*, *Gary's House*, and *Mr Bailey's Minder*. Her prize-winning youth theatre play *Skate* toured to Belfast in 2005. Her television credits include 'Palace of Dreams', 'Bananas in Pyjamas', 'Police Rescue', 'The Secret Life of Us', and various dramas for ABC TV Education.

CAST



Bellami Atkin
Choreographer /
Featured Dancer /
Ensemble



Eleisha Beddoes
Drama Captain /
Production Crew /
Ensemble



Hannah Belli
Drama Captain /
Ensemble



Bella Boustead
Ensemble



Alexia Brady
Songwriter /
Vocals /
Ensemble



Summer Bush
Music Captain /
Vocals /
Ensemble



Catriona Cottee
Drama Captain /
Ensemble /
Production Crew



Holly Craft
Vocals /
Ensemble



Cassandra Dell
Ensemble /
Production Crew



Natalia Diab
Vocals /
Ensemble



Charlotte Eldridge
Vocals /
Ensemble



Gingerlily Fawke
Ensemble



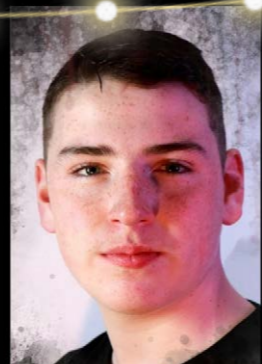
Ayisha Salem-Towner
Anna /
Ensemble



Danielle Smith
Anna /
Vocals /
Ensemble



Taylor Oliver
Tomas /
Drums /
Ensemble



Tom Brusco
Tomas /
Vocals /
Ensemble



Valentino Gavan-Shar
Featured Dancer /
Ensemble



Georgia Goodwin
Publicity Captain /
Vocals /
Ensemble



Phoebe Gould
Choreographer /
Featured Dancer /
Ensemble



Maddison Harris
Vocals /
Ensemble

CREW



Gracie Herweg
Vocals /
Ensemble



Ella Isaacs
Ensemble



Phoebe Jansz
Music Captain /
Vocals /
Flute /
Ensemble



Suzie Jones
Ensemble



Abigail Kenner
Ensemble



Billie Lagerewskij
Ensemble



Michailia Lyri
Ensemble



Kayla Magno-Thornton
Featured Dancer /
Ensemble



Alysha Mehegan
Featured Dancer /
Ensemble



Joana Peixer Coral
Ensemble



Abbie Pitchford
Vocals /
Ensemble



Sienna Rambert
Ensemble



Katie Roche
Vocals /
Ensemble



Joshua Underwood
Songwriter /
Guitar /
Ensemble



Allysia Waddy
Music Captain /
Songwriter /
Piano /
Vocals / Ensemble



Jasmine Walter
Vocals /
Ensemble



Finn Carson
Composer /
Bass Guitar /
Keyboards



Jorja Daisley
Set /
Production Crew



Finn Jacques-Bell
Set /
Production Crew



Cassandra Moore
Set /
Production Crew



Annika Morgan
Set /
Production Crew



Flynn Rainford Mullen
Set /
Production Crew



Jack Thompson
Stage Manager



Mina Young
Set /
Production Crew

Director..... Madeline Dundon
 Production Coordinators..... Madeline Dundon
 Andrew Martin
 Roderick Price
 Jenn Walter
 Musical Director..... Jenn Walter
 Assistant Director..... Julia Duke
 Choreographers..... Bellami Atkin
 Phoebe Gould
 Choreography Assistants..... Kaitlyn Clift
 Ebony-Rose Dossetter
 Songwriters/Composers..... Alexia Brady
 Finn Carson
 Joshua Underwood
 Allysia Waddy
 Jenn Walter
 Publicity Design..... Roderick Price
 Publicity..... Eleisha Beddoes
 Georgia Goodwin
 Kacey Cooke
 Program..... Jenn Walter
 Set Design..... Madeline Dundon
 Roderick Price
 Andrew Martin
 Set Construction Lead..... Andrew Martin
 Roderick Price

Set Construction Team /
 Backstage & Tech Crew..... Aamilah Ahmed
 Tia Calwell
 Jorja Daisley
 Brody Fahie
 Finn Jacques-Bell
 Cassandra Moore
 Annika Morgan
 Flynn Rainford Mullen
 Mina Young
 Cast
 Props..... Madeline Dundon
 Cast & Crew
 Stage Manager..... Jack Thompson
 Lighting & Sound Design..... Andrew Davies
 Lighting & Sound Ops..... Fletcher Brown
 Mitchell van Kesteren
 RSC Students
 Costumes..... Madeline Dundon
 Hair & Make-up..... Catriona Cottee
 Cassandra Dell
 Gabi Bergman
 Ticketing..... Jenn Walter
 Front-of-House..... Parents & friends of RSC
 Kiosk..... Leonie Macartney
 Parents & friends of RSC

SCENES & SONGS ACT ONE

Song: "No Time, No Place"

Music by Finn Carson ~ Lyrics by Alexia Brady

Vocals: Allysia Waddy, Maddi Harris, Alexia Brady, Summer Bush, Phoebe Jansz, Jasmine Walter, Katie Roche and vocal ensemble

Scene 1 - Night. A once-grand city house, battered by mortar shells.

Anna & Tomas

Story: "The Ogre's Golden Hairs"

Miller.....	Natalia Diab	Miller's Wife.....	Billie Lagerewskij
Boy.....	Jasmine Walter	Nasty King.....	Phoebe Jansz
Princess.....	Cassandra Dell	Townswoman.....	Eleisha Beddoes
Ferryman.....	Catriona Cottee	Ogre's Grandmother.....	Bella Boustead
Ogre.....	Gracie Herweg		

Scene 2 - Day. Anna's house.

Tomas

Scene 3 - Day. City streets.

Anna & Tomas

Woman 1.....	Suzie Jones	Woman 2.....	Maddi Harris
Man in Jacket.....	Joana Peixer Coral	Sardine Man.....	Alexia Brady
Cheerful Man.....	Hannah Belli	Woman 3.....	Michailia Lyri

Scene 4 - Night. Anna's house.

Anna & Tomas

Song: "Lazy Gus"

Music by Joshua Underwood ~ Lyrics by Joshua Underwood and Allysia Waddy

Choreography by Bellami Atkin and Phoebe Gould

Vocals: Phoebe Jansz, Katie Roche and ensemble

Story: "Lazy Gus"

Townsperson 1.....	Bella Boustead	Townsperson 2.....	Jasmine Walter
Lazy Gus.....	Hannah Belli	Mrs Brown.....	Suzie Jones
Fisherman.....	Gingerlily Fawke	Farmer Jones.....	Ella Isaacs

Scene 5 - Day. Street outside Anna's old apartment building.

Anna

Woman Neighbour..... Cassandra Dell

Scene 6 - Day. Railway station.

Tomas

Station Guard..... Catriona Cottee

Song: "As the Sky Falls Down"

Music, Lyrics and Arrangement by Jenn Walter

Choreography by Kaitlyn Clift and Ebony-Rose Dossetter

Vocals: Alexia Brady, Tom Brusco, Allysia Waddy, Phoebe Jansz, Summer Bush and vocal ensemble

Letter Readers: Joana Peixer Coral, Bella Boustead, Ayisha Salem-Towner/Danielle Smith, Cassandra Dell, Abigail Kenner, Gingerlily Fawke and Sienna Rambert

Scene 7 - Night. Anna's house.

Anna & Tomas

Story: "The Singing Bones"

Blind King.....	Gingerlily Fawke	Prince Peter.....	Joana Peixer Coral
Prince Serge.....	Summer Bush	Doctor.....	Phoebe Jansz
Musician 1.....	Gracie Herweg	Musician 2.....	Natalia Diab

SCENES & SONGS ACT TWO

Song: "What the Moon Saw"

Music by Jenn Walter ~ Lyrics by Nick Walter and Jenn Walter

Vocals: Summer Bush, Phoebe Jansz, Charlotte Eldridge, Natalia Diab, Jasmine Walter, Katie Roche and Gracie Herweg

Choreography/Dancers: Bellami Atkin and Phoebe Gould

Scene 1 - Day. Anna's house.

Anna & Tomas

Scene 2 - Day. City streets.

Anna

Blackmarket Woman..... Eleisha Beddoes

Scene 3 - Day. Railway station.

Tomas

Station Guard..... Catriona Cottee

Scene 4 - Day. City streets.

Anna

Woman in Water Queue..Suzie Jones

Man in Water Queue..... Maddison Harris

Woman in Coat..... Eleisha Beddoes

Song: "How Long?"

Music and Lyrics by Joshua Underwood

Vocals: Danielle Smith

Scene 5 - Night. Anna's house.

Anna & Tomas

Story: "The Ice Dragon and the She-Wolf"

Ivan..... Abigail Kenner

Katerina..... Joana Peixer Coral

Anoushka..... Cassandra Dell

Music: "The Wolves"

Music and Arrangement by Finn Carson

Choreography by Kaitlyn Clift and Ebony-Rose Dossetter

Dancers: Bellami Atkin, Phoebe Gould, Joana Peixer Coral, Valentino Gavan-Shar, Kayla Magno-Thornton and Alysha Mehegan

Story: "The Hunter and the Meal of Sorrow"

The Hunter..... Alexia Brady

Hunter's Wife..... Summer Bush

Neighbour..... Eleisha Beddoes

Neighbour 2..... Sienna Rambert

Scene 6 - Day. Railway station.

Tomas

Station Guard..... Catriona Cottee

Nick..... Joshua Underwood

Scene 7 - Night. Anna's house.

Tomas

Nick..... Joshua Underwood

Potato-Head Boy..... Tom Brusco/Taylor Oliver

Song: "When I See You Again"

Music by Allysia Waddy ~ Lyrics by Allysia Waddy and Alexia Brady

Vocals: Holly Craft, Jasmine Walter, Charlotte Eldridge, Gracie Herweg and ensemble

ACKNOWLEDGEMENTS

With our most sincere thanks to the following people and companies for supporting our production:

Bec Turnbull
Jan Collins
Andrea Gordon
Kathryn Martin
Jake Johnson
Julie Kennedy
Kacey Cooke
Heloise Martin
Lena Grace
Alex von Scheven
Jacqui Barr
Sarah Spence

Andrew Davies
Nick Walter
Nuworks Theatre
Wesley College
Prue Hendrikx
David Van Doorn

Paul Sadler Swimland
Henry's Mercato Stud Park
Kitchens-U-Build
Stud Park Shopping Centre
Rise Health Group
Ventura Buses
Jetts Rowville
Bendigo Bank Ferntree Gully

